

## Certificate of Authenticity

To whom it may concern,

We hereby confirm that all products where 14k gold is stated as the material are made from solid 14 karat gold.

Yours Faithfully,

()

Daniel Tramer

Managing Partner

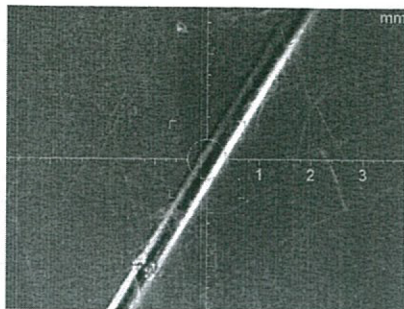


# XRAY GOLDScope SDD

Product: 7 / AuAgCuZnNiSn Dir.: Gold

Application: 11 / AuAgCuZnNiSn

Block: 1



## Calibration: Standard free

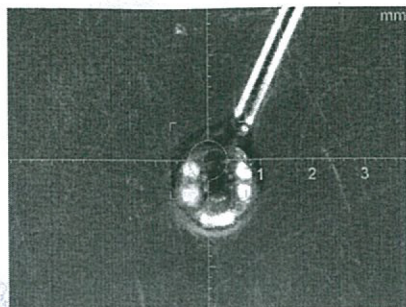
n	Au[%]	Ag[%]	Cu[%]	Zn[%]	Ni[%]	Sn[%]
1	59.69	14.55	22.80	2.956	0.009	0.000
Mean	59.69 %	14.55 %	22.80 %	2.956 %	0.009 %	
Standard deviation	----- %	----- %	----- %	----- %	----- %	
C.O.V. (%)	0.00	0.00	0.00	0.00	0.00	
Range	0.000 %	0.000 %	0.000 %	0.000 %	0.000 %	
Number of readings	1	1	1	1	1	
Min. reading	59.69 %	14.55 %	22.80 %	2.956 %	0.009 %	
Max. reading	59.69 %	14.55 %	22.80 %	2.956 %	0.009 %	
Measuring time	45 sec					
Operator:						

# XRAY GOLDScope SDD

Product: 7 / AuAgCuZnNiSn Dir.: Gold

Block: 2

Application: 11 / AuAgCuZnNiSn



## Calibration: Standard free

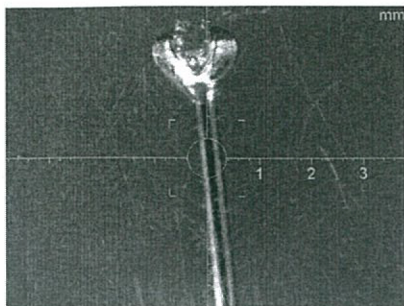
n	Au[%]	Ag[%]	Cu[%]	Zn[%]	Ni[%]	Sn[%]
1	59.59	13.80	23.85	2.726	-0.004	0.042
Mean	Au 59.59 %	Ag 13.80 %	Cu 23.85 %	Zn 2.726 %	Ni -0.004 %	
Standard deviation	----- %	----- %	----- %	----- %	----- %	
C.O.V. (%)	0.00	0.00	0.00	0.00	0.00	
Range	0.000 %	0.000 %	0.000 %	0.000 %	0.000 %	
Number of readings	1	1	1	1	1	
Min. reading	59.59 %	13.80 %	23.85 %	2.726 %	-0.004 %	
Max. reading	59.59 %	13.80 %	23.85 %	2.726 %	-0.004 %	
Measuring time	45 sec					
Operator:						

# XRAY GOLDScope SDD

Product: 7 / AuAgCuZnNiSn Dir.: Gold

Application: 11 / AuAgCuZnNiSn

Block: 3



## Calibration: Standard free

n	Au[%]	Ag[%]	Cu[%]	Zn[%]	Ni[%]	Sn[%]
1	58.69	7.622	28.67	5.078	-0.006	-0.049
Mean	Au 58.69 %	Ag 7.622 %	Cu 28.67 %	Zn 5.078 %	Ni -0.006 %	
Standard deviation	----- %	----- %	----- %	----- %	----- %	
C.O.V. (%)	0.00	0.00	0.00	0.00	0.00	
Range	0.000 %	0.000 %	0.000 %	0.000 %	0.000 %	
Number of readings	1	1	1	1	1	
Min. reading	58.69 %	7.622 %	28.67 %	5.078 %	-0.006 %	
Max. reading	58.69 %	7.622 %	28.67 %	5.078 %	-0.006 %	
Measuring time	45 sec					
Operator:						